

# Smart Classroom Podium Crestron

Quick Guide Reference

## Podium



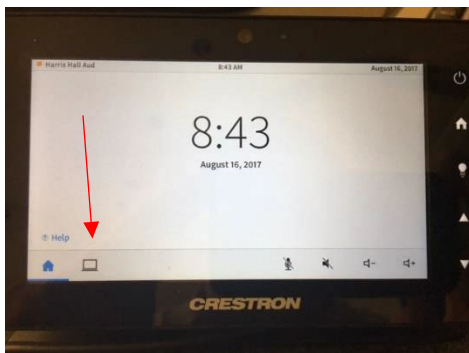
- Treat Equipment Gently
- No food or drinks on the Podium
- Refrain from placing erasers, chalk, or any objects on the podium that can cause damage to the equipment.

## Connecting a Laptop



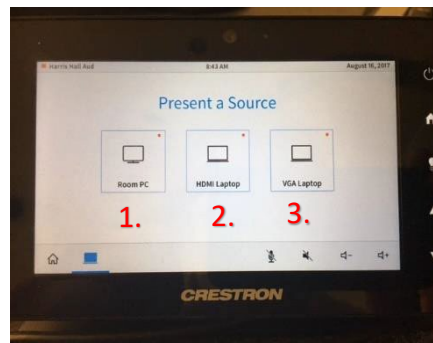
- **Connect the:**
  - Network Line
  - HDMI
  - VGA cable
- Power up your laptop.
- We recommend temporarily disabling the wireless connection and connecting directly to the network. The wireless usually results in slower page loading times.

## Turning System On



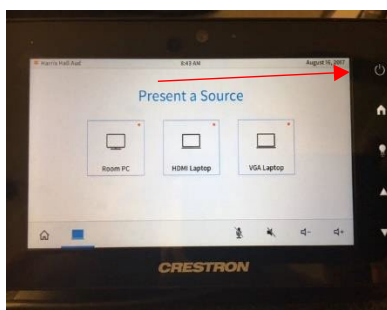
**Select Source:** Touch computer icon at bottom left and the source page will appear.

## Source Presentation



1. **For Laptop HDMI:** Plug your laptop into the HDMI cable and select HDMI laptop on touch panel.
2. **For Laptop VGA:** Plug your laptop into the VGA cable and select VGA laptop on touch panel.
3. **For Room PC:** Select room PC on touch panel.


## System Off



**Turn System Off:** Touch power button at top right of touch panel

**Turn System Off:** Select "shut down" or "continue use" button on pop up page

## Need Assistance?

Please contact our ServiceDesk using the QR code on the Podium, call 804-524-5210, Email us at [VSU\\_ServiceDesk@vsu.edu](mailto:VSU_ServiceDesk@vsu.edu), or Submit a ticket via the  ServiceDesk icon